



## Application

Strainers protect the piping system and its components against impurities.

## Working medium

- water
- steam
- other non-corrosive gases and liquids

## Testing

According to EN 12266, shell test with water as a standard.

## Connection to the piping

- flanged ends acc. to EN 1092-1, ISO 7005-1, GOST 12815-80
- welded ends acc. to EN 12627

## Installation

Y-type strainers may be installed in any position, T-type strainers may be installed in horizontal position only. The flow direction shall correspond to the arrow on the strainer body.

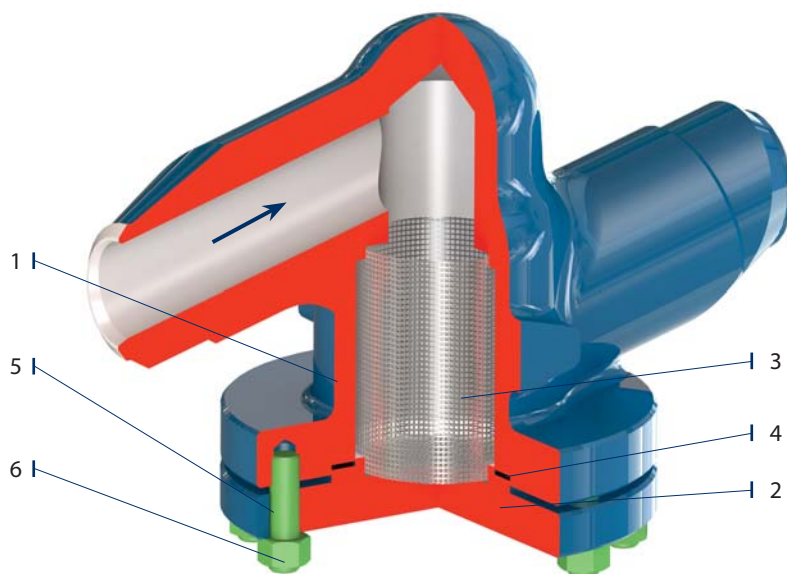
## Screen options

mesh / cm <sup>2</sup>	mesh size in mm
100	0,4 standard design
200	0,35
400	0,25
600	0,1

- other options after agreement with supplier



TYPE „T“

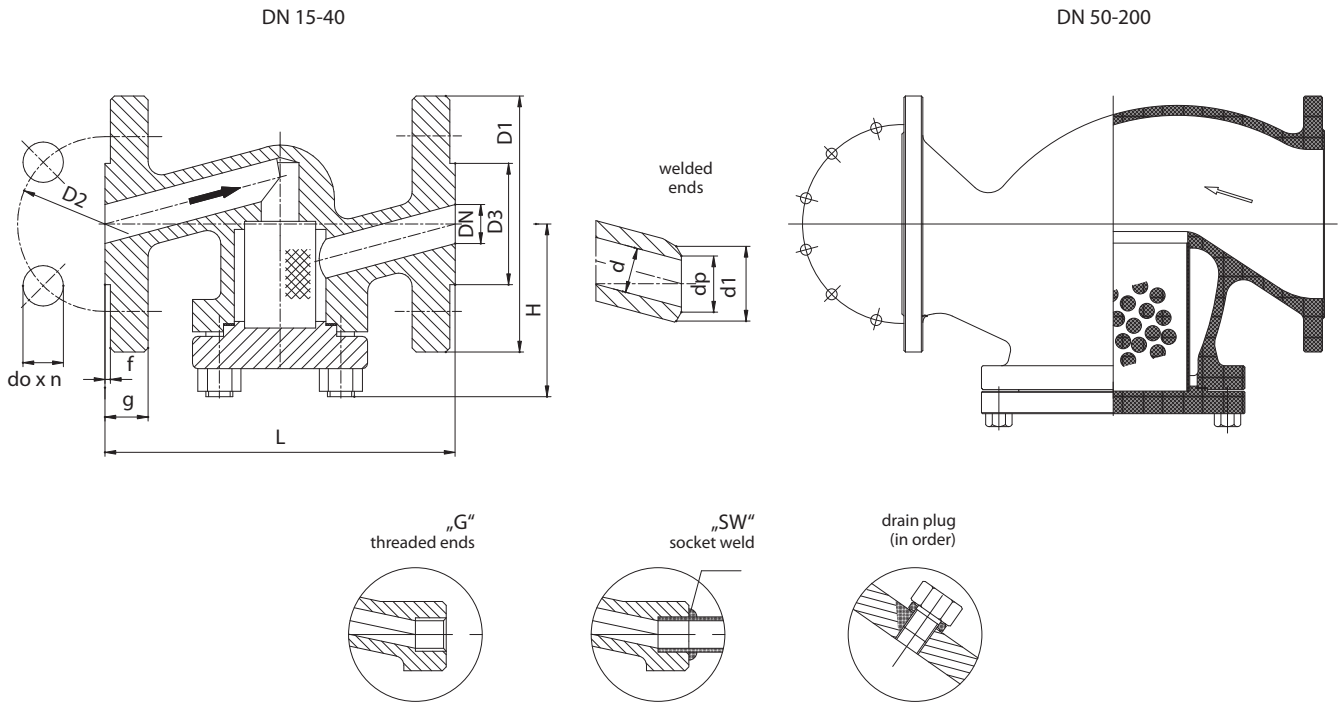


Position	Component
1	Body
2	Bonnet
3	Strainer
4	Gasket
5	Bolts
6	Nuts



PN 63-100 • DN 15-200 • Tmax 560 °C (450 °C)

Connection: EN 1092-1, ISO 7005-1, GOST 12815-80 FLANGED ENDS  
 EN 12627 WELDED ENDS



Material

Component	T <sub>max</sub> 450 °C	T <sub>max</sub> 530 °C	T <sub>max</sub> 560 °C	T <sub>max</sub> 450 °C	T <sub>max</sub> 530 °C	T <sub>max</sub> 550 °C
	DN 15-40			DN 50-200		
Body, bonnet	P250GH (1.0460)	16Mo3 (1.5415)	13CrMo4-5 (1.7335)	GP240GH (1.0619)	G20Mo5 (1.5419)	G17CrMo5-5 (1.7357)
Strainer	X6CrNiTi18 10 (1.4541)					
Gasket	Grafit + Austenitic steel					

PN	DN	d	Flanged ends										Welded ends				
			D1		D3		D2	do x n	L	g	f	H	kg	d1	dp	L	kg
			GOST	EN	GOST	EN											
63 100	15	14	105		47 45		75	14 x 4	210	20	2	70	4,0	22	17	160	2,7
	20	19	125	130	58		90	18 x 4	230	22	2	75	6,2	28	22	160	2,7
	25	23	135	140	68		100	22 x 4	230	24	2	75	8,3	35	28,5	160	2,7
	32	30	150	155	78		110	22 x 4	260	24	2	95	11,5	44	36,5	230	5,2
	40	38	165	170	88		125	22 x 4	260	28	3	95	14,8	50	43	230	7,7
63	50	45	175	180	102		135	22 x 4	300	26	3	140	15,7	62	54	300	12,9
	65	62	200	205	122		160	22 x 8	340	26	3	170	37,5	77	69	340	26,3
	80	73	210	215	133	138	170	22 x 8	380	28	3	195	40,3	91	81	380	27,5
	100	94	250		158	162	200	22 x 8	430	30	3	200	54,0	117	104	430	37,2
	125	120	295		184	188	240	26 x 8	500	34	3	225	76,0	144	130,5	500	48,9
	150	144	340	345	212	218	290	33 x 8	550	36	3	300	151,0	172	156,5	550	101,1
	200	195	405	415	285		345	36 x 12	650	42	3	400	215,0	223	204,5	650	135,0
100	50	45	195		102		145	26 x 4	300	28	3	140	15,7	62	54	300	12,9
	65	62	220		122		170	26 x 8	340	30	3	170	37,5	77	69	340	26,3
	80	73	230		133	138	180	26 x 8	380	32	3	195	40,3	91	81	380	27,5
	100	94	265		158	162	210	30 x 8	430	36	3	200	54,0	117	104	430	37,2
	125	120	310	315	184	188	250	33 x 8	500	40	3	225	76,0	144	127	500	48,9
	150	144	350	355	212	218	290	33 x 12	550	44	3	300	151,0	172	154	550	101,1
	200	195	430		285		360	36 x 12	650	52	3	400	215,0	223	199,5	650	135,0

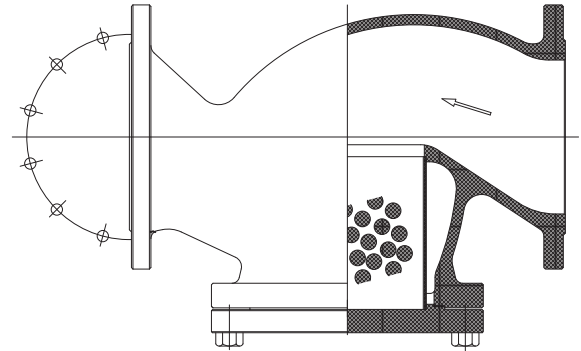
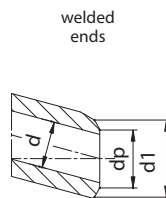
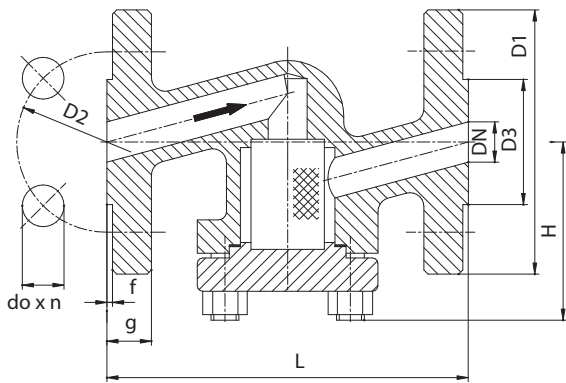


PN 160 • DN 15-200 • Tmax 560 °C (450 °C)

Connection: EN 1092-1, ISO 7005-1, GOST 12815-80 FLANGED ENDS  
 EN 12627 WELDED ENDS

DN 15-40

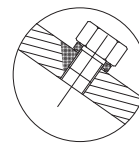
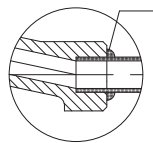
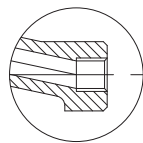
DN 50-200



„G” threaded ends

„SW” socket weld

drain plug (in order)



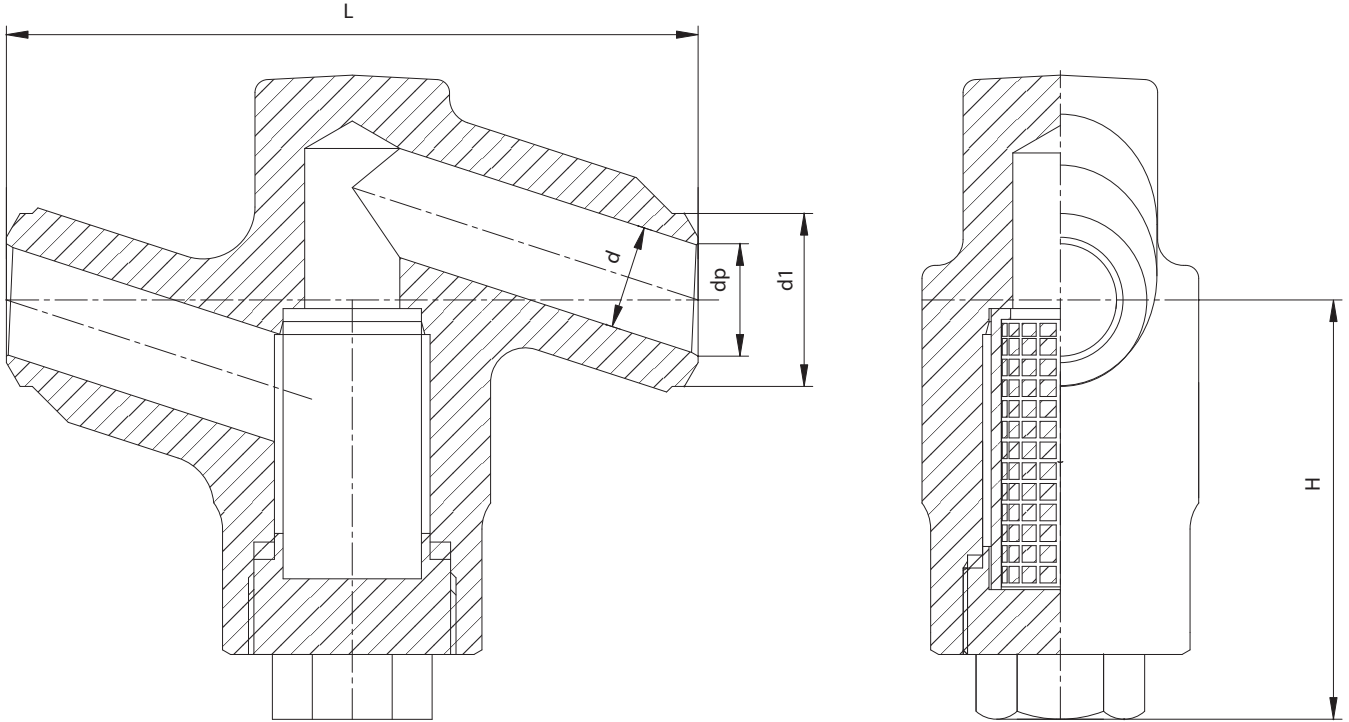
## Material

Component	T <sub>max</sub> 450 °C	T <sub>max</sub> 530 °C	T <sub>max</sub> 560 °C	T <sub>max</sub> 450 °C	T <sub>max</sub> 530 °C	T <sub>max</sub> 550 °C
	DN 15-40			DN 50-200		
Body, bonnet	P250GH (1.0460)	16Mo3 (1.5415)	13CrMo4-5 (1.7335)	GP240GH (1.0619)	G20Mo5 (1.5419)	G17CrMo5-5 (1.7357)
Strainer	X6CrNiTi18 10 (1.4541)					
Gasket	Grafit + Austenitic steel					

DN	d	Flanged ends										Welded ends				
		D1		D3		D2	do x n	L	g	f	H	kg	d1	dp	L	kg
		GOST	EN	GOST	EN											
15	14	105		45		75	14 x 4	210	20	2	70	4,0	22	17	160	2,7
20	19	125	130	58		90	18 x 4	230	22	2	75	6,2	28	21	160	2,7
25	23	135	140	68		100	22 x 4	230	24	2	75	8,3	35	27	160	2,7
32	30	150	155	78		110	22 x 4	260	24	2	95	11,5	44	34,5	230	5,2
40	38	165	170	88		125	22 x 4	260	28	3	95	14,8	50	43	230	7,7
50	45	195		102		145	26 x 4	300	30	3	140	15,7	62	52,5	300	12,9
65	62	220		122		170	26 x 8	340	34	3	170	37,5	77	65	340	26,3
80	73	230		133	138	180	26 x 8	380	36	3	195	40,3	91	76,5	380	27,5
100	94	265		158	162	210	30 x 8	430	40	3	200	54,0	117	98,5	430	37,2
125	120	310	315	184	188	250	33 x 8	500	44	3	225	76,0	144	120,5	500	48,9
150	144	350	355	212	218	290	33 x 12	550	44	3	300	151,0	172	144,5	550	101,1
200	190	430		285		360	36 x 12	650	60	3	400	215,0	223	192	650	135,0

PN 250-320 • DN 15-50 • T<sub>max</sub> 600 °C (450 °C)  
 PN 400 on request

Connection: EN 12627 WELDED ENDS



### Material

Component	T <sub>max</sub> 450 °C	T <sub>max</sub> 530 °C	T <sub>max</sub> 560 °C	T <sub>max</sub> 570 °C	T <sub>max</sub> 600 °C
Body, bonnet	P250GH (1.0460)	16Mo3 (1.5415)	13CrMo4-5 (1.7335)	14MoV6-3 (1.7715)	11CrMo9-10 (1.7383)
Strainer	X6CrNiTi18 10 (1.4541)				
Packing rings	Grafit + Austenitic steel				

DN	Welded ends						H	Flanged ends							
	d	d1 max	dp min	L	kg			D1	D3	D2	do x n	L	g	f	kg
					PN 250	PN 320									
15	14	22	15,0	160	4	3,8	97	130	45	90	18 x 4	230	26	2	8,7
20	18	28	19,0	160	4	3,8	97	150	58	105	22 x 4	260	30	2	11,3
25	24	35	24,0	160	4	3,8	97	160	68	115	22 x 4	260	34	2	13,3
32	30	44	31,5	300	15	14	200	-	-	-	-	300	-	-	-
40	34	50	36,0	300	15	14	200	195	88	145	26 x 4	300	38	3	30,2
50	42	77	45,0	300	15	14	200	210	102	160	26 x 8	350	42	3	32,0
65	56	91	59,5	340	26,5	24,5	220	255	122	200	30 x 8	400	51	3	57,8
80	76	117	81,0	380	55,5	52,5	243	275	138	220	30 x 8	450	55	3	93,0
100	92	144	102,0	430	71	68	271	335	162	265	36 x 8	520	65	3	138,5
125	112	172	120,5	500	91	88	-	380	188	310	36 x 12	600	75	3	186,9