

BALL VALVE K91.51 FIG F112

Application

- oil and gas
- petrochemical and chemical industry
- power industry
- water supply

Working medium

- gases
- liquids, impurities must not be abrasive

**DN 15-200
PN 16-40**



Working temperature

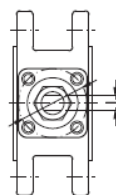
- + 200°C

Technical description

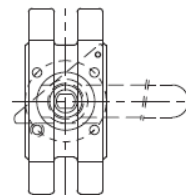
- cast body
- two-pieces body, individual parts of the body are connected by a thread
- soft-seated seats



DN 15-25



DN 32-100



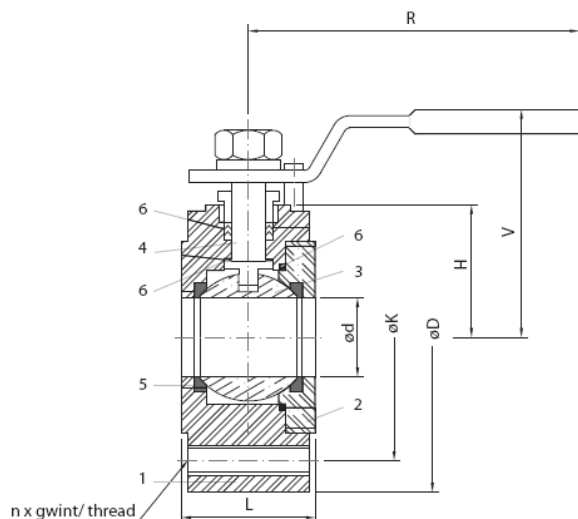
DN 125-150

Connection to piping

- wafer type

Material

Position	Component	Material
1	Body	1.4408
2	Cover	1.4408
3	Ball	1.4408
4	Stem	1.4401
5	Seat	PTFE
6	Seal	PTFE



PN 16

DN	Ø d	ØD	ØK	n x závít	V	H	L	R	ISO 5211	kg
65	65	185	145	4 x M16	131	79	94	243	F07	8,8
80	80	200	160	8 x M16	152	87	118	243	F07	14
100	100	220	180	8 x M16	182	108	140	328	F10	20
125	125	250	210	8 x M16	-	169	200	328	F10	37
150	150	285	240	8 x M20	-	208	240	400	F12	62
200	200	340	295	12 x M20	-	238	310	500	F12	108

PN 40

DN	Ø d	ØD	ØK	n x závít	V	H	L	R	ISO 5211	kg
15	15	95	65	4 x M12	63	32	35	105	F03	2,20
20	20	105	75	4 x M12	66	35	38	105	F03	2,60
25	25	115	85	4 x M12	76	39	42	158	F04	3,00
32	32	140	100	4 x M16	85	50	50	158	F04	4,20
40	38	150	110	4 x M16	110	54	60	183	F05	5,20
50	50	165	125	4 x M16	118	63	80	183	F05	6,40
65	65	185	145	4 x M16	131	79	94	243	F07	9,60
80	80	200	160	8 x M16	152	87	118	243	F07	15,20
100	100	220	180	8 x M16	182	108	140	328	F10	22,00
125	125	250	210	8 x M16	-	169	200	328	F10	-
150	150	285	240	8 x M20	-	208	240	400	F12	-
200	200	340	295	12 x M20	-	238	310	500	F12	-

The ARMATURY Group a.s. company reserves the right for changes of technical products-specifications, and is not responsible for incidental misprints. Issued in February 2016.