

Application

Pressure locks are special pipeline valves for power systems. They facilitate performance of pressure tests of piping systems of boilers. If necessary, they may be equipped with an internal assembly for chemical cleaning which shall be performed before the pressure test.

Working medium

- water
- steam

Technical description

The bodies of pressure locks are made of forged semi-finished products. The pressure lock consists of the following main parts – body, cover, sealing plate, cover for chemical cleaning.

According to the internal assembly used, the pressure lock offers the following possibilities of use:

- normal operation (internal assembly for normal operation)
- pressure testing (internal assembly for pressure testing)
- chemical cleaning (internal assembly for chemical cleaning + cover for chemical cleaning)

Operation

- self-acting valve

Testing

- acc. to EN 12266-1

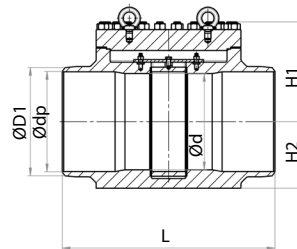
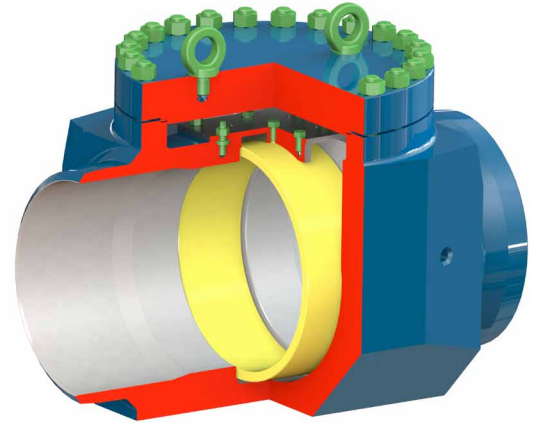
Connection to the piping

- **flanged ends** acc. to EN 1092-1, ISO 7005-1, GOST 12815-80
- **welded ends** acc. to EN 12627

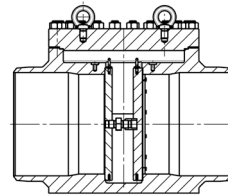
Installation

Pressure locks may be installed into horizontal pipings only, the cover must be above the body.

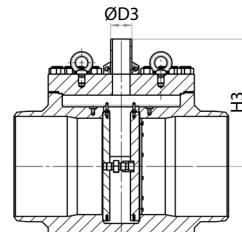
* The purchase order for pressure locks shall specify the required service and test parameters, material and size of piping, connecting dimensions of the pipe for chemical cleaning, and/or additional requirements that are necessary for correct manufacture of this product.



internal assembly for normal operation



internal assembly for pressure testing



internal assembly for chemical cleaning

PN 63

DN	D1	Piping*	dp*	d	L*	H1	H2	H3*	D3*	kg
300	325	323,9x11	301	300	838	380	230	560		650
350	359	355,6x12,5	330	336	889	390	250	580		685
400	411	406,4x14,2	377	387	991	470	280	620		920
450	465	457x14,2	427,5	431	1092	480	300	650		1400
500	515	508x16	474,5	482	1194	500	335	670		2100
600	619	610x20	568,5	584	1397	570	370	730		2600

*these dimensions will be determined acc. to customer

PN 100

DN	D1	Piping*	dp*	d	L*	H1	H2	H3*	D3*	kg
300	325	323,9x14,2	295,5	298	838	380	230	560		650
350	359	355,6x16	324	326	889	390	250	580		685
400	411	406,4x16	374	374	991	470	280	620		920
450	465	457x20	417	419	1092	480	300	650		1400
500	515	508x20	467,5	463	1194	500	335	670		2100
600	619	610x25	560	558	1397	570	370	730		2600

*these dimensions will be determined acc. to customer